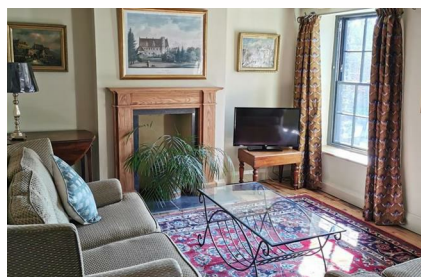


4a Market Street  
Sandwich  
CT13 9DA

£1,250


Finn's  
2 Market Street  
Sandwich  
CT13 9DA  
t: 01304 614471  
e: sandwich@finns.co.uk  
www.finns.co.uk



A surprisingly spacious two bedroom flat set across two floors, offered unfurnished. This characterful property has been tastefully refurbished in recent years while preserving original features such as exposed beams, brickwork, and fireplaces. A unique feature of the flat is the retained lower section of the original staircase to the second floor, now enhanced with plant lighting. The property also benefits from double-glazed sash windows and gas central heating with zoned controls. For additional peace of mind, a fire suppression system and safety lighting have been installed.

- A spacious two bedroom unfurnished flat
- Character property
- Excellent location
- Set over two floors
- Exposed beams and fireplaces
- EPC D
- Council Tax Band C
- Deposit £1440
- No pets
- Available 18th April 2026



Energy Efficiency Rating		
	Current	Potential
<i>Very energy efficient - lower running costs</i>		
(92 plus) <b>A</b>		
(81-91) <b>B</b>		
(69-80) <b>C</b>		
(55-68) <b>D</b>	<b>57</b>	<b>61</b>
(39-54) <b>E</b>		
(21-38) <b>F</b>		
(1-20) <b>G</b>		
<i>Not energy efficient - higher running costs</i>		
<b>England &amp; Wales</b>	EU Directive 2002/91/EC 	

Viewing: By appointment through Finn's, Sandwich  
Telephone: 01304 614471

Council Tax: C

Date: These particulars were prepared on: 26th March 2026

Agent's Note: Wherever appliances or services, fixtures or fittings have been mentioned in these particulars they have not been tested by us. Measurements should not be relied upon. Unless specifically referred to above all fitted carpets, curtains, fixtures and fittings and garden outbuildings and ornaments are excluded from the sale. None of the statements in these particulars are to be relied upon as statements or representatives of fact. Photographs are for guidance only and do not imply items shown are included in the sale - some aspects may have changed since they were taken. No person in the employment of Finn's has authority to give any representation or warranty in relation to this property.

FINN'S CANTERBURY  
82 Castle Street  
Canterbury  
Kent CT1 2QD  
Lettings: 01227 452111

FINN'S SANDWICH  
2 Market Street  
Sandwich  
Kent CT13 9DA  
Lettings: 01304 614471

FINN'S ST NICHOLAS AT WADE  
The Packhouse  
Wantsum Way  
St Nicholas at Wade  
Kent CT7 0NE  
01843 848320

