



since 1865

View Cottage, The Street, Wickhambreaux, Canterbury, Kent, CT3 1RP

[www.finns.co.uk](http://www.finns.co.uk)

## View Cottage, The Street, Wickhambreaux, Canterbury, Kent, CT3 1RP

**£312,000 Freehold**

A well presented two bedroom terraced cottage with bright & spacious rooms and a delightful garden offered for sale with no onward chain.

- Two Bedroom Cottage
- Village Location
- No Chain
- Period Features
- Pretty Rear Garden
- Close To Wickhambreaux Primary School

The front door opens to the sitting room which has stripped floor boards and an open fire and leads through to the spacious kitchen/dining room which has a good range of wall and base units and ample space for a dining table – a door leads to the rear garden.

Upstairs, the landing leads to the two bedrooms and family bathroom.

Outside, the established rear garden is a particular highlight of the property. The garden is mainly laid to lawn and has seating areas, a variety of established trees and shrubs as well as a stream at the end of the garden.

View Cottage is situated in the sought-after village of Wickhambreaux, an idyllic setting surrounded by beautiful countryside and scenic walks. The village itself offers a thriving community atmosphere with a popular public house, The Rose, an OFSTED Outstanding-rated primary school and a beautiful 13th-century church, all just moments from the property.



Despite its peaceful rural setting, the property is conveniently situated only five miles from the Cathedral City of Canterbury, with its excellent range of shopping, dining and cultural amenities. Canterbury is also renowned for its outstanding educational facilities, including two universities, The King's School, Simon Langton Grammar Schools, Barton Court Grammar, Kent College and St Edmund's, all within approximately 20 minutes' drive.

Transport connections are excellent, with Canterbury West station approximately 20 minutes away, offering high-speed rail services to London St Pancras in around 56 minutes.

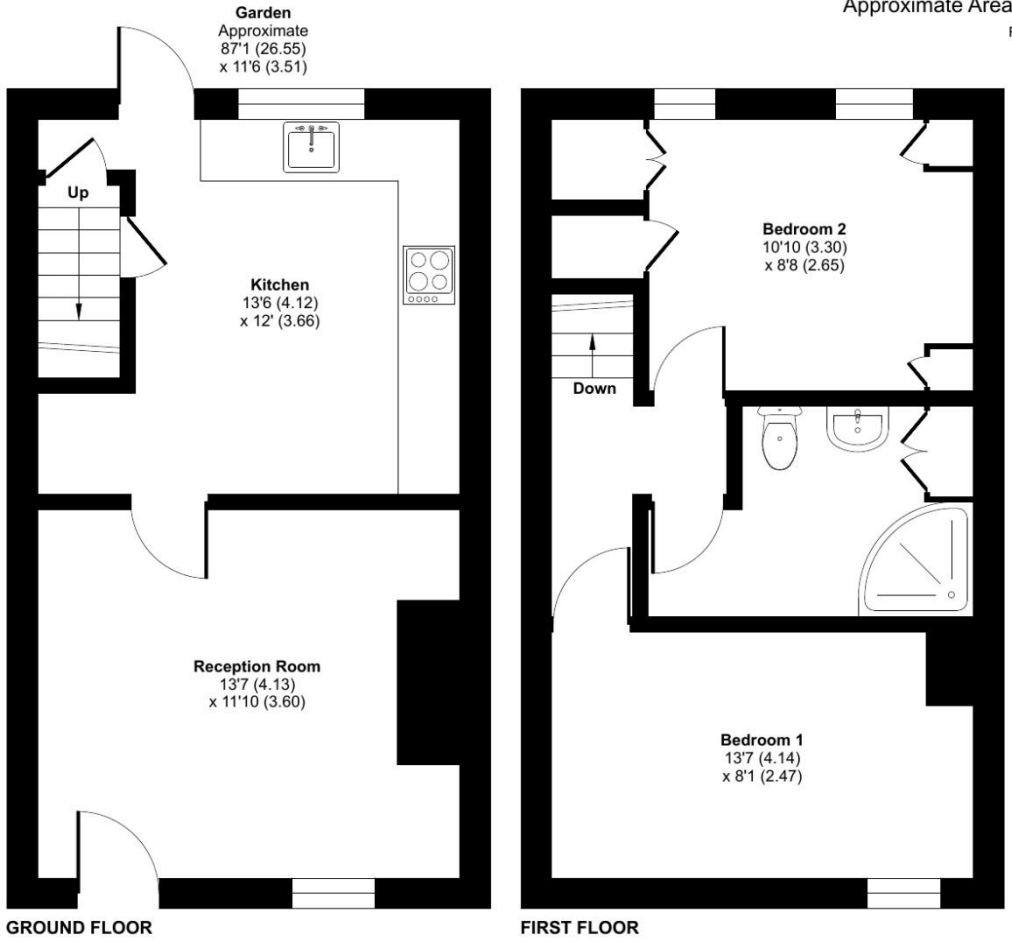
**Viewing:** By appointment through Finn's, Canterbury.  
Tel: 01227 454111

**Services:** Mains gas, electricity, water & drainage.

**Council Tax:** Band 'C' according to the website of the Valuation Office Agency ([www.voa.gov.uk](http://www.voa.gov.uk)).

**Date:** These particulars were prepared on 12/5/26





Approximate Area = 658 sq ft / 61.1 sq m  
For identification only - Not to scale



Energy Efficiency Rating		Current	Potential
Very energy efficient - lower running costs			
(92+)	A		
(81-91)	B		
(69-80)	C		
(55-68)	D		
(39-54)	E	55	71
(21-38)	F		
(1-20)	G		
Not energy efficient - higher running costs			
England & Wales		EU Directive 2002/91/EC	
WWW.EPC4U.COM			

Floor plan produced in accordance with RICS Property Measurement Standards incorporating International Property Measurement Standards (IPMS2 Residential). © nctechcom 2026. Produced for Finns. REF: 1450911

**Agent's Note:** Wherever appliances or services, fixtures or fittings have been mentioned in these particulars they have not been tested by us. Measurements should not be relied upon. Unless specifically referred to above all fitted carpets, curtains, fixtures and fittings and garden outbuildings and ornaments are excluded from the sale. None of the statements in these particulars are to be relied upon as statements or representations of fact. Photographs are for guidance only and do not imply items shown are included in the sale – some aspects may have changed since they were taken. No person in the employment of Finn's has authority to make or give any representation or warranty in relation to this property.

**FINN'S CANTERBURY**  
82 Castle Street  
Canterbury  
Kent CT1 2QD  
Sales: 01227 454111  
Lettings: 01227 452111

**FINN'S SANDWICH**  
2 Market Street  
Sandwich  
Kent CT13 9DA  
Sales: 01304 612147  
Lettings: 01304 614471

**FINN'S ST NICHOLAS AT WADE**  
The Pack House  
Wantsum Way  
St Nicholas at Wade  
Kent CT7 0NE  
Tel: 01843 848230

