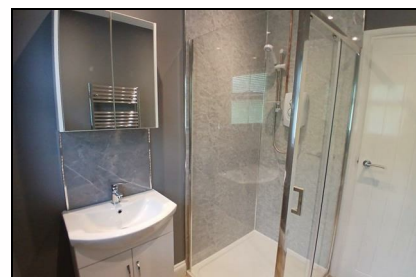
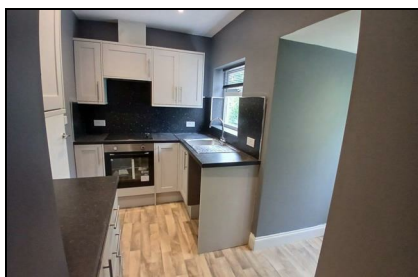


Newlands Lane
Ramsgate
CT12 6RJ

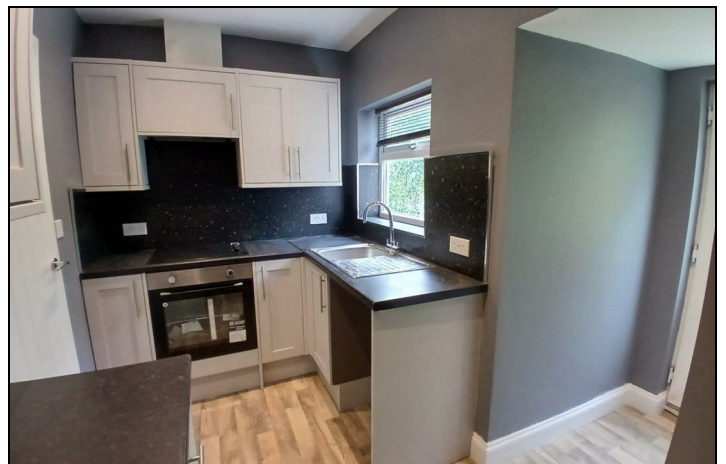
£1,500 Per Month

Finn's
2 Market Street
Sandwich
CT13 9DA
t: 01304 614471
e: sandwich@finns.co.uk
www.finns.co.uk



Available unfurnished, a three bedroom detached bungalow. Having been recently refurbished the accommodation comprises three bedrooms, shower room, living room, kitchen and dining room. The property has electric heating, double glazing, private cesspool, driveway and gardens.

- Refurbished detached bungalow
- 3 bedrooms
- Shower room
- Driveway for 2 cars
- Electric heating
- Double glazing
- Council Tax band C
- Deposit £1730
- EPC E
- Available 18 May 2026



Energy Efficiency Rating		
	Current	Potential
<i>Very energy efficient - lower running costs</i>		
(92 plus) A		
(81-91) B		
(69-80) C		79
(55-68) D		
(39-54) E	39	
(21-38) F		
(1-20) G		
<i>Not energy efficient - higher running costs</i>		
England & Wales	EU Directive 2002/91/EC	

Viewing: By appointment through Finn's, Sandwich
Telephone: 01304 614471

Council Tax: C

Date: These particulars were prepared on: 28th April 2026

Agent's Note: Wherever appliances or services, fixtures or fittings have been mentioned in these particulars they have not been tested by us. Measurements should not be relied upon. Unless specifically referred to above all fitted carpets, curtains, fixtures and fittings and garden outbuildings and ornaments are excluded from the sale. None of the statements in these particulars are to be relied upon as statements or representatives of fact. Photographs are for guidance only and do not imply items shown are included in the sale - some aspects may have changed since they were taken. No person in the employment of Finn's has authority to give any representation or warranty in relation to this property.

FINN'S CANTERBURY
82 Castle Street
Canterbury
Kent CT1 2QD
Lettings: 01227 452111

FINN'S SANDWICH
2 Market Street
Sandwich
Kent CT13 9DA
Lettings: 01304 614471

FINN'S ST NICHOLAS AT WADE
The Packhouse
Wantsum Way
St Nicholas at Wade
Kent CT7 0NE
01843 848320

