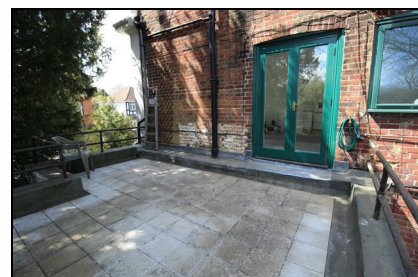


Flat 4 75 Old Dover Road  
Canterbury  
CT1 3DB

£900 PCM

Finn's  
82 Castle Street  
Canterbury  
CT1 2QD  
t: 01227 452111  
e: canterbury@finns.co.uk  
www.finns.co.uk



A one bedroom first floor flat situated five minutes from Kent and Canterbury hospital and ten minutes to the city centre . Situated in the desirable South Canterbury area this property offers excellent accommodation comprising of : An L shaped hallway, and modern bathroom with luxury fittings and a large walk in shower. An extremely light and spacious living /dining room with triple aspect bay windows to the front. Feature Victorian fireplace. French doors opening to a good sized private balcony. Fitted kitchen with breakfast bar and appliances and one double bedroom with built in wardrobe. This beautifully presented flat will be extremely popular to any commuters or professionals working close to the city . Parking is available on street with a permit from Canterbury City Council.

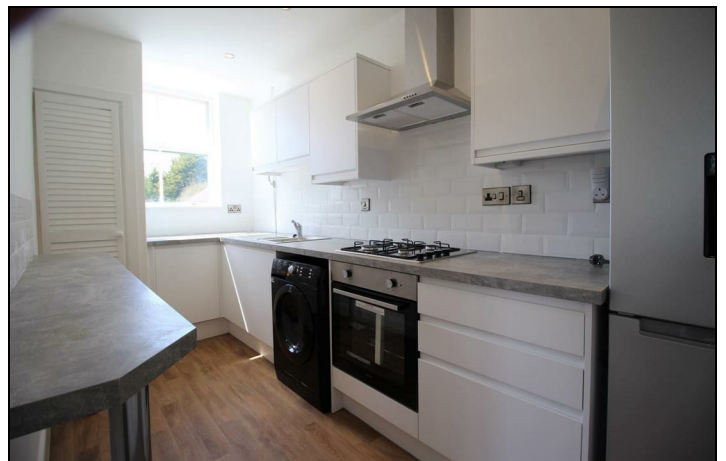
Flat 4 75 Old Dover Road  
Canterbury  
CT1 3DB

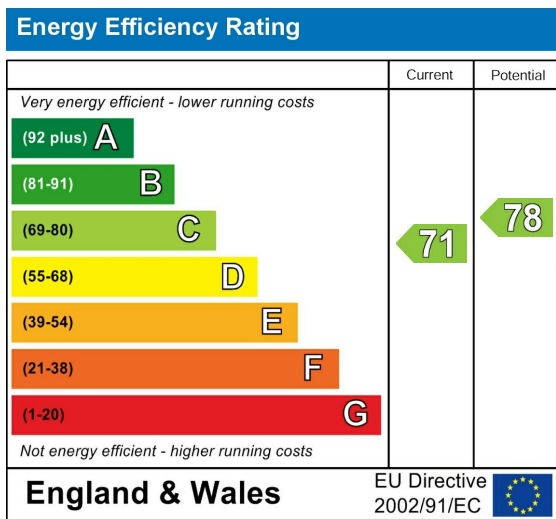
- One bedroom first floor flat
- Modern fitted kitchen
- Large double bedroom
- Balcony
- Professionals Only
- EPC C
- One small pet may be considered
- Canterbury City Council Tax Band B
- Deposit £1035
- Available from 1st May 2026



Viewing: By appointment through Finn's, Canterbury - Telephone:  
01227 452111

Council Tax: B  
Date: These particulars were prepared on: 16th March 2026





Agent's Note: Wherever appliances or services, fixtures or fittings have been mentioned in these particulars they have not been tested by us. Measurements should not be relied upon. Unless specifically referred to above all fitted carpets, curtains, fixtures and fittings and garden outbuildings and ornaments are excluded from the sale. None of the statements in these particulars are to be relied upon as statements or representatives of fact. Photographs are for guidance only and do not imply items shown are included in the sale - some aspects may have changed since they were taken. No person in the employment of Finn's has authority to give any representation or warranty in relation to this property.

FINN'S CANTERBURY  
 82 Castle Street  
 Canterbury  
 Kent CT1 2QD  
 Sales: 01277 454111  
 Lettings: 01227 452111

FINN'S SANDWICH  
 2 Market Street  
 Sandwich  
 Kent CT13 9DA  
 Sales: 01304 612147  
 Lettings: 01304 614471

FINN'S ST NICHOLAS AT WADE  
 The Packhouse  
 Wantsum Way  
 St Nicholas at Wade  
 Kent CT7 0NE  
 01843 848320

