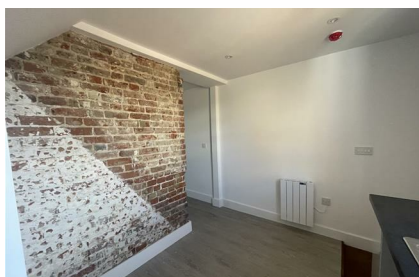


Wincheap  
Canterbury  
CT1 3BE

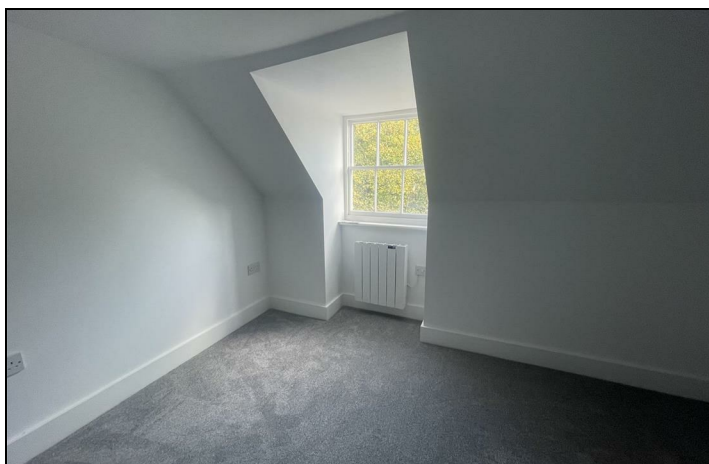
£1,150 Per Calendar Month


Finn's  
82 Castle Street  
Canterbury  
CT1 2QD  
t: 01227 452111  
e: [canterbury@finns.co.uk](mailto:canterbury@finns.co.uk)  
[www.finns.co.uk](http://www.finns.co.uk)



A completely refurbished two bedroom cottage close to the Wincheap roundabout and minutes from the centre of Canterbury. As you enter the property you are greeted by a modern kitchen with some integrated appliances, this flows nicely into the living room with exposed brick. Upstairs you will find a double bedroom and modern shower room and a further staircase leading to another double bedroom. There is a separate charge of £200.00 per month for electricity and water.

- Refurbished two bedroom cottage
- Close to city centre
- Walking distance to Canterbury East station
- Council Tax band B
- EPC E
- Available 4 February 2026
- Sorry no pets
- Deposit £1320



Energy Efficiency Rating		
	Current	Potential
Very energy efficient - lower running costs		
(92 plus) <b>A</b>		
(81-91) <b>B</b>		
(69-80) <b>C</b>		
(55-68) <b>D</b>		
(39-54) <b>E</b>		
(21-38) <b>F</b>		
(1-20) <b>G</b>		
Not energy efficient - higher running costs		
<b>England &amp; Wales</b>	EU Directive 2002/91/EC	



Viewing: By appointment through Finn's, Canterbury  
Telephone: 01227 452111

Council Tax:  
Date: These particulars were prepared on: 13th February 2026

Agent's Note: Wherever appliances or services, fixtures or fittings have been mentioned in these particulars they have not been tested by us. Measurements should not be relied upon. Unless specifically referred to above all fitted carpets, curtains, fixtures and fittings and garden outbuildings and ornaments are excluded from the sale. None of the statements in these particulars are to be relied upon as statements or representatives of fact. Photographs are for guidance only and do not imply items shown are included in the sale - some aspects may have changed since they were taken. No person in the employment of Finn's has authority to give any representation or warranty in relation to this property.

FINN'S CANTERBURY  
82 Castle Street  
Canterbury  
Kent CT1 2QD  
Lettings: 01227 452111

FINN'S SANDWICH  
2 Market Street  
Sandwich  
Kent CT13 9DA  
Lettings: 01304 614471

FINN'S ST NICHOLAS AT WADE  
The Packhouse  
Wantsum Way  
St Nicholas at Wade  
Kent CT7 0NE  
01843 848320

