

Chapel Cottages
Wickhambreaux
CT3 1RP

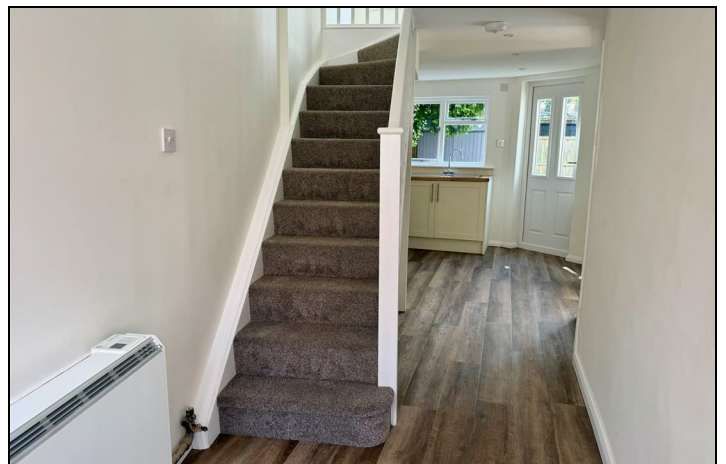
£1,250 Per Month

Finn's
82 Castle Street
Canterbury
CT1 2QD
t: 01227 452111
e: canterbury@finns.co.uk
www.finns.co.uk



A charming two-bedroom cottage that has recently undergone a complete refurbishment, offering beautifully presented accommodation throughout. The open-plan layout allows natural light to flow effortlessly through the property, creating a bright and welcoming atmosphere. The stylish kitchen opens seamlessly into the living and dining area and provides direct access to the rear garden. A wood-burning stove adds warmth and character to the living space, making it especially cosy during the winter months. Upstairs, there are two generous double bedrooms and a spacious landing, offering ample room for a home office, study area or reading nook. The rear garden is currently being reseeded and the trees are being carefully cut back, creating what will become a wonderful suntrap—perfect for enjoying long summer evenings.

- Two bedroom character cottage
- Fully refurbished
- Open plan layout
- Spacious landing with many options
- Woodburning stove and hearth
- New carpets throughout
- Deposit £1,440
- Council Tax Band B
- EPC Band D



Energy Efficiency Rating		
	Current	Potential
<i>Very energy efficient - lower running costs</i>		
(92 plus) A		
(81-91) B		83
(69-80) C		
(55-68) D	63	
(39-54) E		
(21-38) F		
(1-20) G		
<i>Not energy efficient - higher running costs</i>		
England & Wales	EU Directive 2002/91/EC	

Viewing: By appointment through Finn's, Canterbury
Telephone: 01227 452111

Council Tax: B

Date: These particulars were prepared on: 12th June 2026

Agent's Note: Wherever appliances or services, fixtures or fittings have been mentioned in these particulars they have not been tested by us. Measurements should not be relied upon. Unless specifically referred to above all fitted carpets, curtains, fixtures and fittings and garden outbuildings and ornaments are excluded from the sale. None of the statements in these particulars are to be relied upon as statements or representatives of fact. Photographs are for guidance only and do not imply items shown are included in the sale - some aspects may have changed since they were taken. No person in the employment of Finn's has authority to give any representation or warranty in relation to this property.

FINN'S CANTERBURY
82 Castle Street
Canterbury
Kent CT1 2QD
Lettings: 01227 452111

FINN'S SANDWICH
2 Market Street
Sandwich
Kent CT13 9DA
Lettings: 01304 614471

FINN'S ST NICHOLAS AT WADE
The Packhouse
Wantsum Way
St Nicholas at Wade
Kent CT7 0NE
01843 848320

