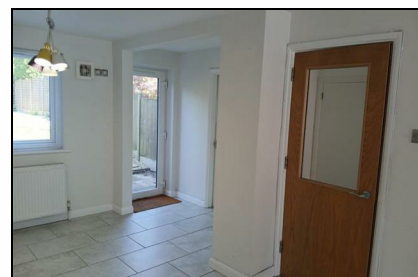


Yew Tree Court  
Canterbury  
CT3 1TH

£1,500 Per Calendar Month

Finn's  
2 Market Street  
Sandwich  
CT13 9DA  
t: 01304 614471  
e: sandwich@finns.co.uk  
www.finns.co.uk



This mid terrace townhouse is located in the sought after village of Littlebourne. Accommodation is arranged over three floors and comprises, entrance hall, cloakroom and front to back kitchen/dining room on the ground floor. On the first floor there is a bedroom with en- suite bathroom and large living room with two further bedrooms and bathroom on the second floor. This family home also has an enclosed rear garden and space for two cars at the front. Further benefits include double glazing and gas central heating.

- 3 Bedroom Mid Terrace Town House
- Village location
- Parking for Two Cars
- Large Living Room
- En-suite Bathroom
- Available early November
- Sorry No Pets
- EPC C
- Canterbury City Council Band D
- Deposit £1730



Viewing: By appointment through Finn's, Sandwich  
 Telephone: 01304 614471

Council Tax: D  
 Date: These particulars were prepared on: 12th February 2026

Energy Efficiency Rating		
	Current	Potential
Very energy efficient - lower running costs		
(92 plus) <b>A</b>		
(81-91) <b>B</b>		<b>86</b>
(69-80) <b>C</b>	<b>75</b>	
(55-68) <b>D</b>		
(39-54) <b>E</b>		
(21-38) <b>F</b>		
(1-20) <b>G</b>		
Not energy efficient - higher running costs		
<b>England &amp; Wales</b>	EU Directive 2002/91/EC	

Agent's Note: Wherever appliances or services, fixtures or fittings have been mentioned in these particulars they have not been tested by us. Measurements should not be relied upon. Unless specifically referred to above all fitted carpets, curtains, fixtures and fittings and garden outbuildings and ornaments are excluded from the sale. None of the statements in these particulars are to be relied upon as statements or representatives of fact. Photographs are for guidance only and do not imply items shown are included in the sale - some aspects may have changed since they were taken. No person in the employment of Finn's has authority to give any representation or warranty in relation to this property.

FINN'S CANTERBURY  
 82 Castle Street  
 Canterbury  
 Kent CT1 2QD  
 Lettings: 01227 452111

FINN'S SANDWICH  
 2 Market Street  
 Sandwich  
 Kent CT13 9DA  
 Lettings: 01304 614471

FINN'S ST NICHOLAS AT WADE  
 The Packhouse  
 Wantsum Way  
 St Nicholas at Wade  
 Kent CT7 0NE  
 01843 848320

